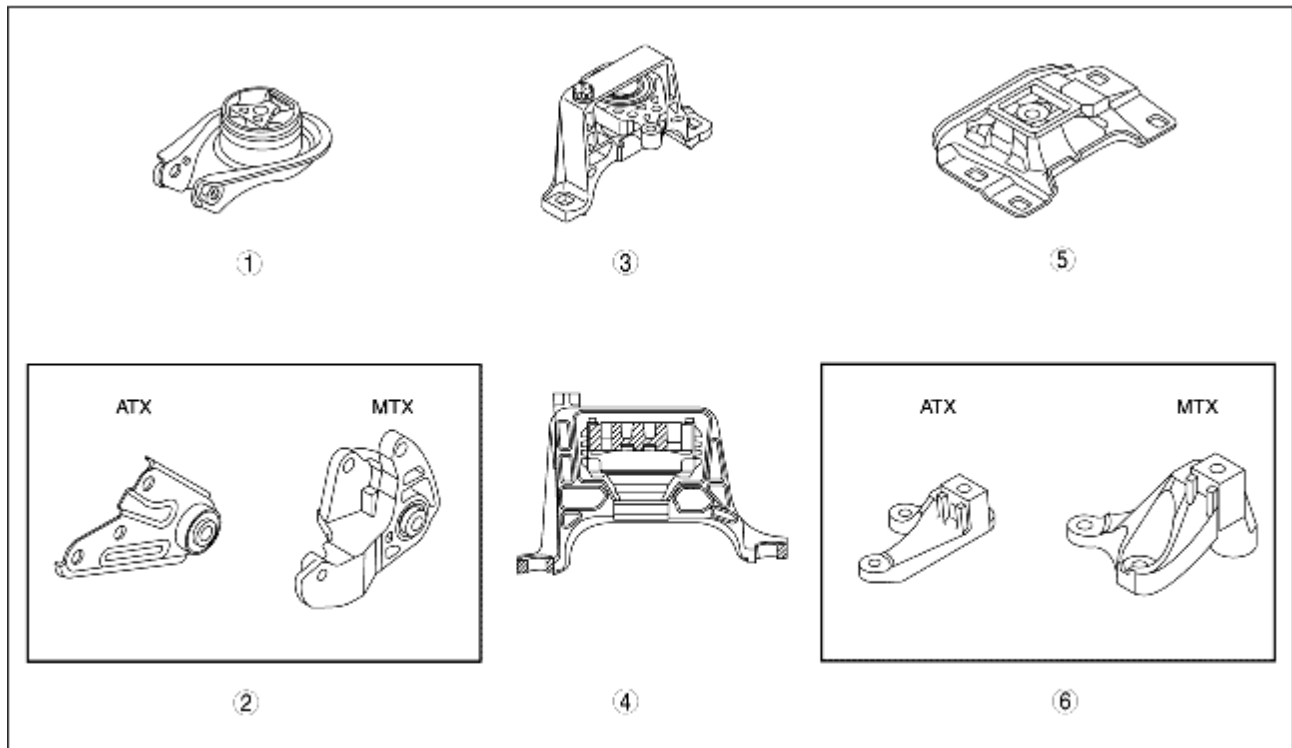


ENGINE MOUNT CONSTRUCTION [ZJ, Z6]

B3E011039000T02

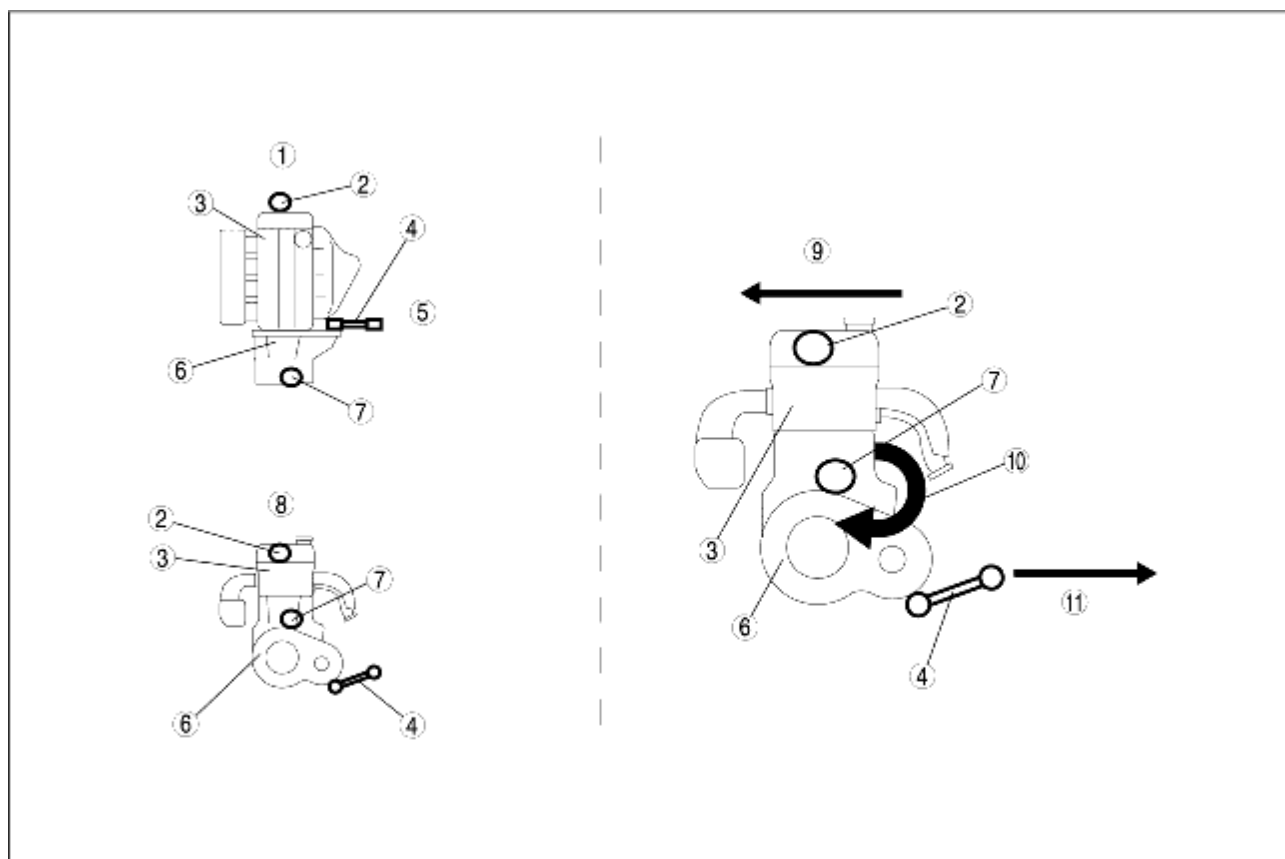
- The exterior frame of the No.1 engine mount rubber is composed of a torque rod-shaped structure including an anti-vibration function, which regulates the conventional rubber function and the rotation from the powertrain.
- The No.3 engine mount rubber is oil-filled for noise reduction and vibration isolation.



B3E01 10T001

1	No.1 engine mount rubber
2	No.1 engine mount bracket
3	No.3 engine mount
4	No.3 engine mount cross-sectional view
5	No.4 engine mount rubber
6	No.4 engine mount bracket

- The engine is supported at the following three points: front part of the engine (No.3 engine mount), one side of the transaxle (No.1 engine mount), and rear upper part of the transaxle (No.4 engine mount). The supporting point at the side of the transaxle (No.1 engine mount) has been set at the lowest edge of the transaxle. With this layout, the No.1 engine mount absorbs the rotation force generated under engine torque fluctuation and transmitted to the power train, and distributes the rotation force to the front and rear part of the engine (swing bob).



B3E01 10T032

1	Powertrain system upper surface
2	No.3 engine mount
3	Engine
4	No.1 engine mount
5	Vehicle rear
6	Transaxle
7	No.4 engine mount
8	Powertrain system back
9	Engine front
10	Torque
11	Engine back